

Introduction to AyniHealth™

3 -Step Framework

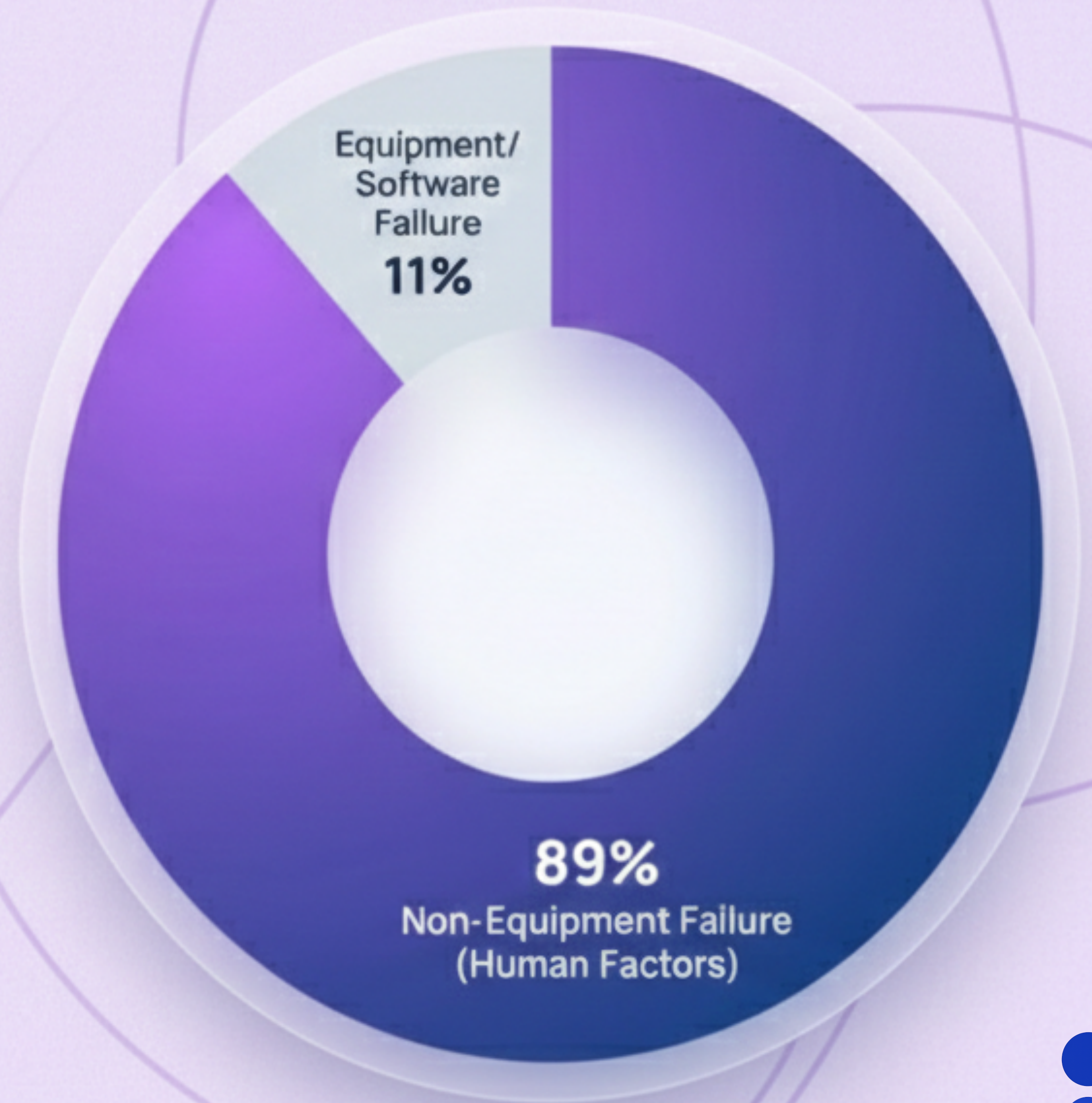
February 26



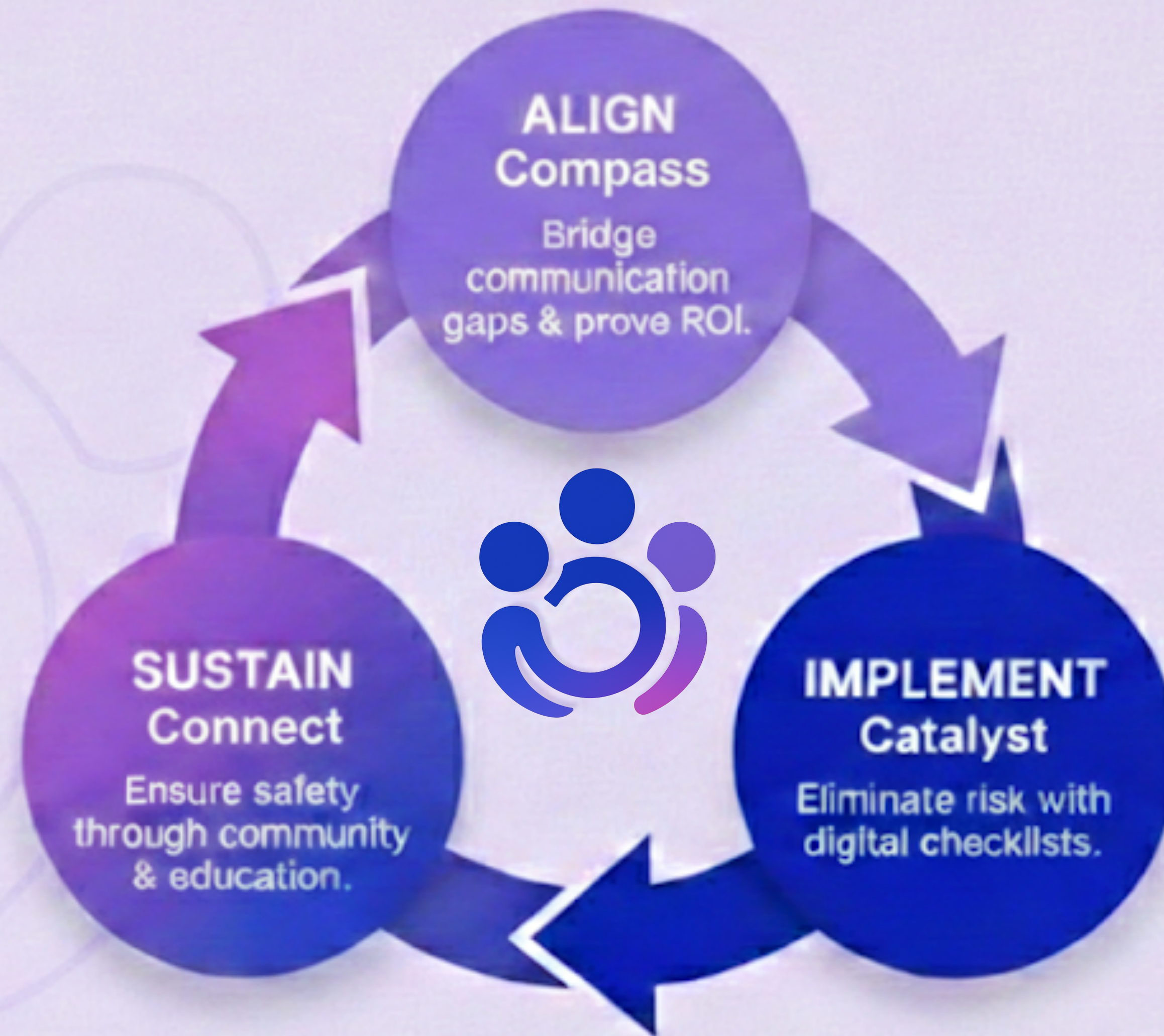
The Risk Reality.

89% of safety incidents stem from human variability, not hardware failure.

We spend millions on equipment, yet resources remain disproportionately focused on technical hardware. The invisible threat is the lack of standardised procedures, inadequate training, and communication breakdowns.



3-step Framework for Transformation



Align with Compass

It's exhausting to be held accountable for a project's success when you're forced to juggle stakeholder demands and budgets without a clear map to guide decisions.

AyniHealth's Compass module gives you the strategic tools to **Align** your team guiding them on a clear, data-driven path to success

Compass gives you a clear strategic roadmap that turns complex project management into a predictable path for you and your team



Compass
Project Management Framework

Compass Workflow

Align. Implement. Sustain.



Organization Profile Active

One-time setup to understand your organisation



Start New Project Coming Soon
Create a project with goals and timeline



ALIGN
Project Initiation Survey Coming Soon
Set KPIs, targets, and baseline metrics



IMPLEMENT
Build Your Project Coming Soon
Add Connect content & Catalyst task lists



IMPLEMENT
Monitor Progress Coming Soon
Track KPIs and team completion rates



SUSTAIN
Bookending Review Coming Soon
AI-powered analysis of outcomes vs. goals

Align. Implement. Sustain.

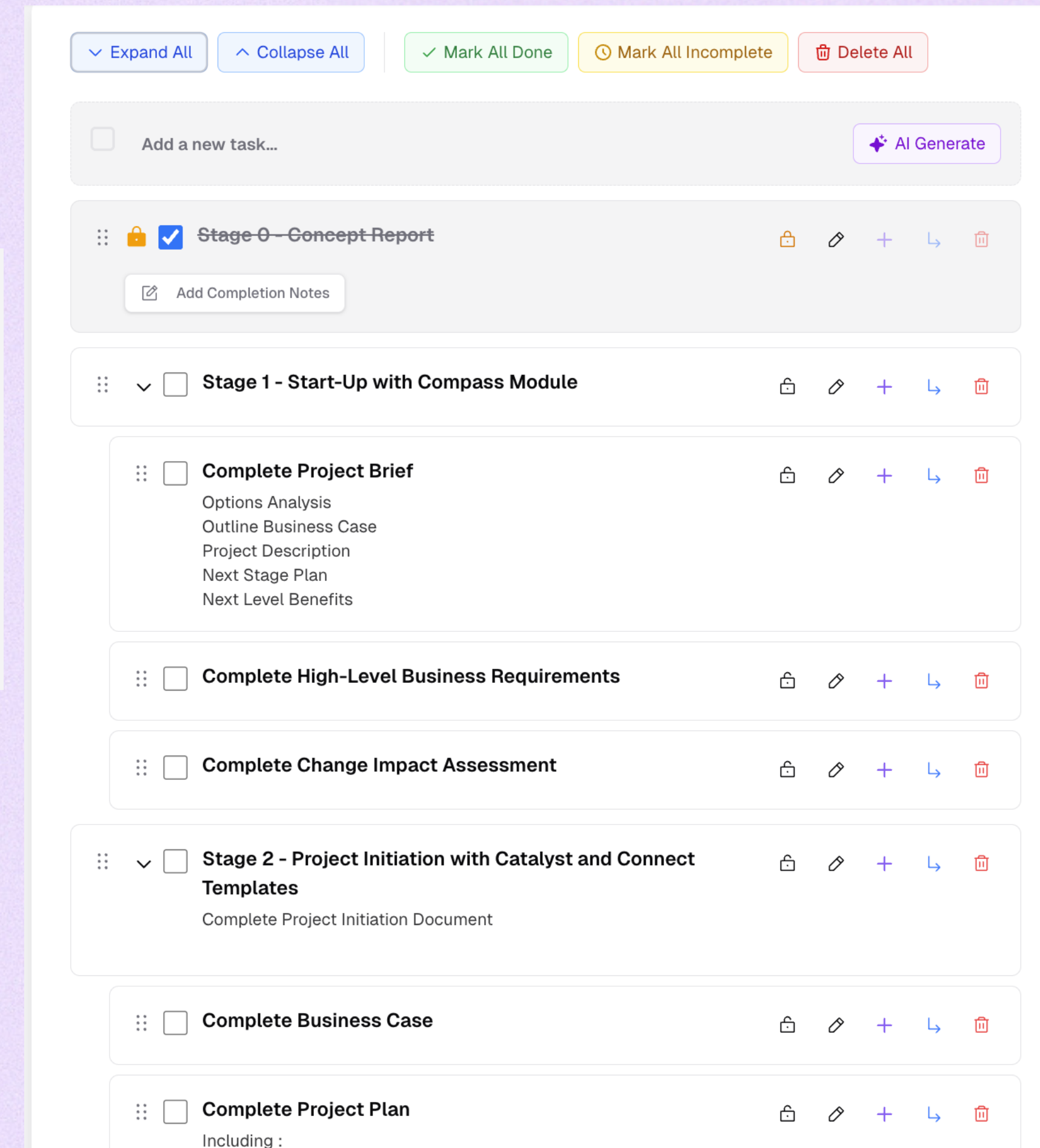
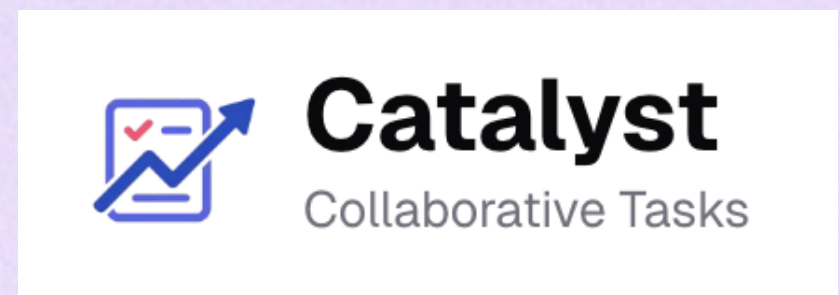
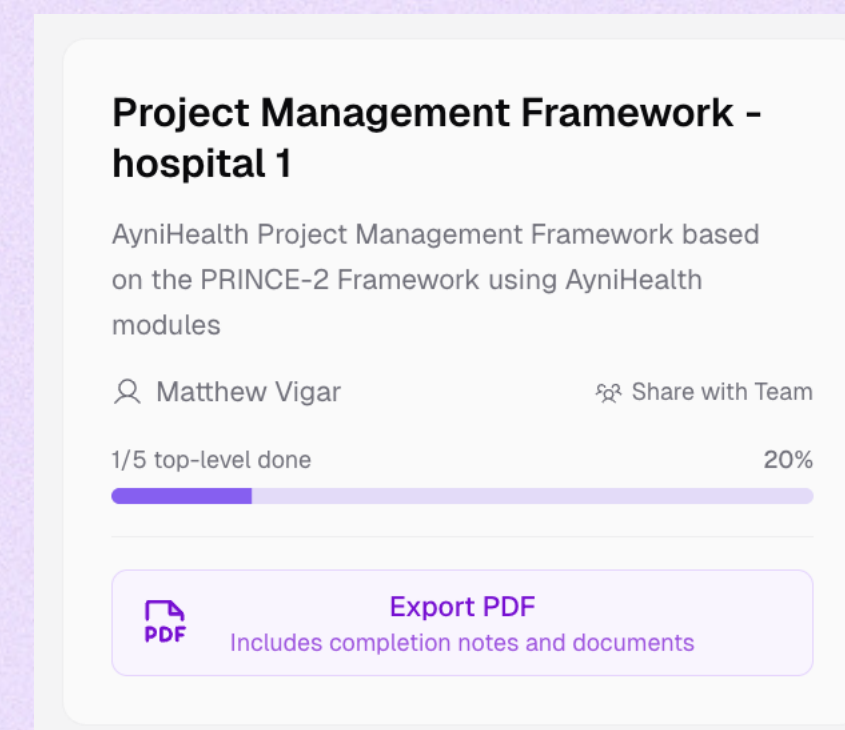


Implement with Catalyst

Implementing change can be difficult when your team only performs a new process once in a while, especially when you lack the bandwidth to act as a full-time project manager.

AyniHealth Catalyst bridges this gap by transforming infrequent workflows into guided, reusable, step-by-step templates - giving you the precision of a project manager without the added workload.

AyniHealth Catalyst turns your implementation plans into simple, repeatable habits so projects finish on time, on budget



Align. Implement. Sustain.



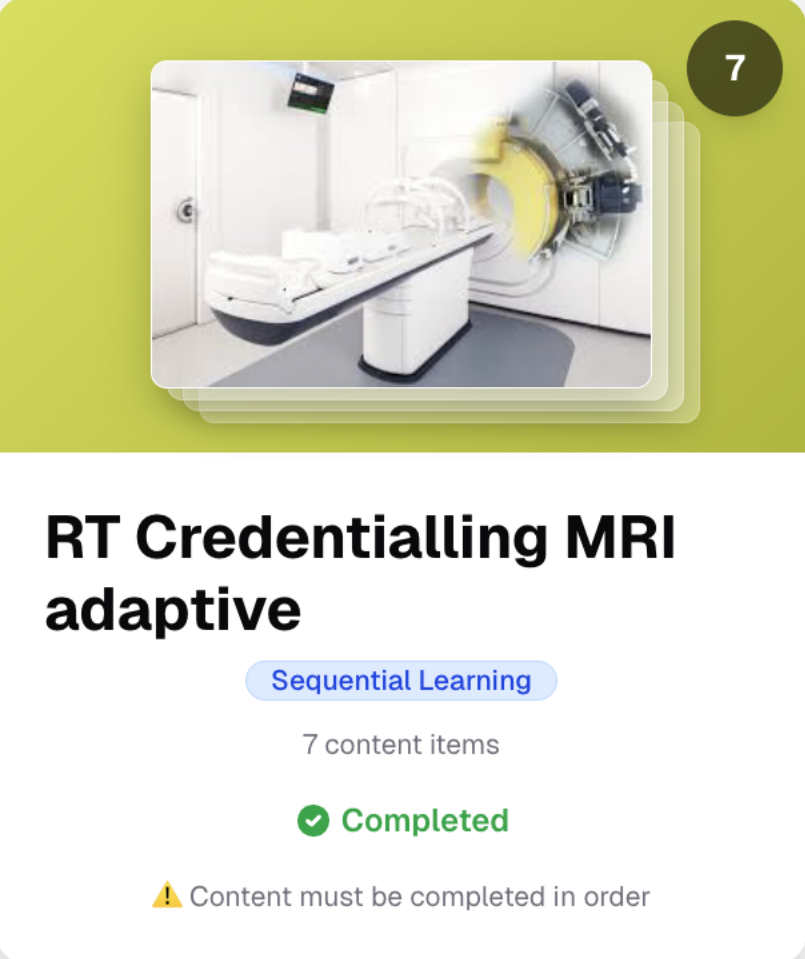
Sustain with Connect



AyniHealth transforms your lifelong learning journey into a shared experience, where community connection and effortless learning tracking give you back the time you deserve.

AyniHealth Connect bridges the gap between peer to peer learning and mandatory reporting, so your team develops together

We simplify clinical competency tracking and continued learning allowing you to turn best practices into daily habits so your team can focus on patient care instead of process.



RT Credentialling MRI adaptive

Sequential Learning

7 content items

Completed

⚠ Content must be completed in order

Challenge Content

✓ Old dogs, new tricks: MR-Linac training and credentialing of radiation oncologists, radiation therapists and medical physicists Completed

Document

ABSTRACT - The introduction of magnetic resonance (MR) linear accelerators (MR-Linacs) into radiotherapy departments has increased in recent years owing to its unique advantages including...

6 pts earned by Journal of Medical Radiation Science

View Document
Opens in new tab

✓ Completed

✓ MRI Safety Level 2 Completed

Video 32 min

✓ MRI Linac Radiation Therapist Protocol Completed

Document

✓ Attend adaptive TPS vendor training Completed

Practical

Align. Implement. Sustain.



What is Ayni?

*Ayni is a Quechua Andean word meaning
"today for you, tomorrow for me."*

This ancient Andean principle of reciprocity is our guiding vision.

By helping each other succeed today, we build a stronger healthcare ecosystem for tomorrow



What problem is AyniHealth trying to solve?

Healthcare organisations tackle change in isolation, reinventing the wheel, repeating the same mistakes, and losing knowledge when staff move on.

We help teams align before they start, implement with proven templates, and sustain expertise over time.

We save hospitals from the risk of cost overruns and miscommunication in projects and ensuring that staff are aligned on the reason for change



How can IHH help?

At AyniHealth we have self funded our development and have started limited trials in Australia and Korea, our aim to help hospitals across Asia, South America and Africa.

IHH could help us validate our solution across key markets in India and SE Asia where the greatest need for access to education and training is the greatest.

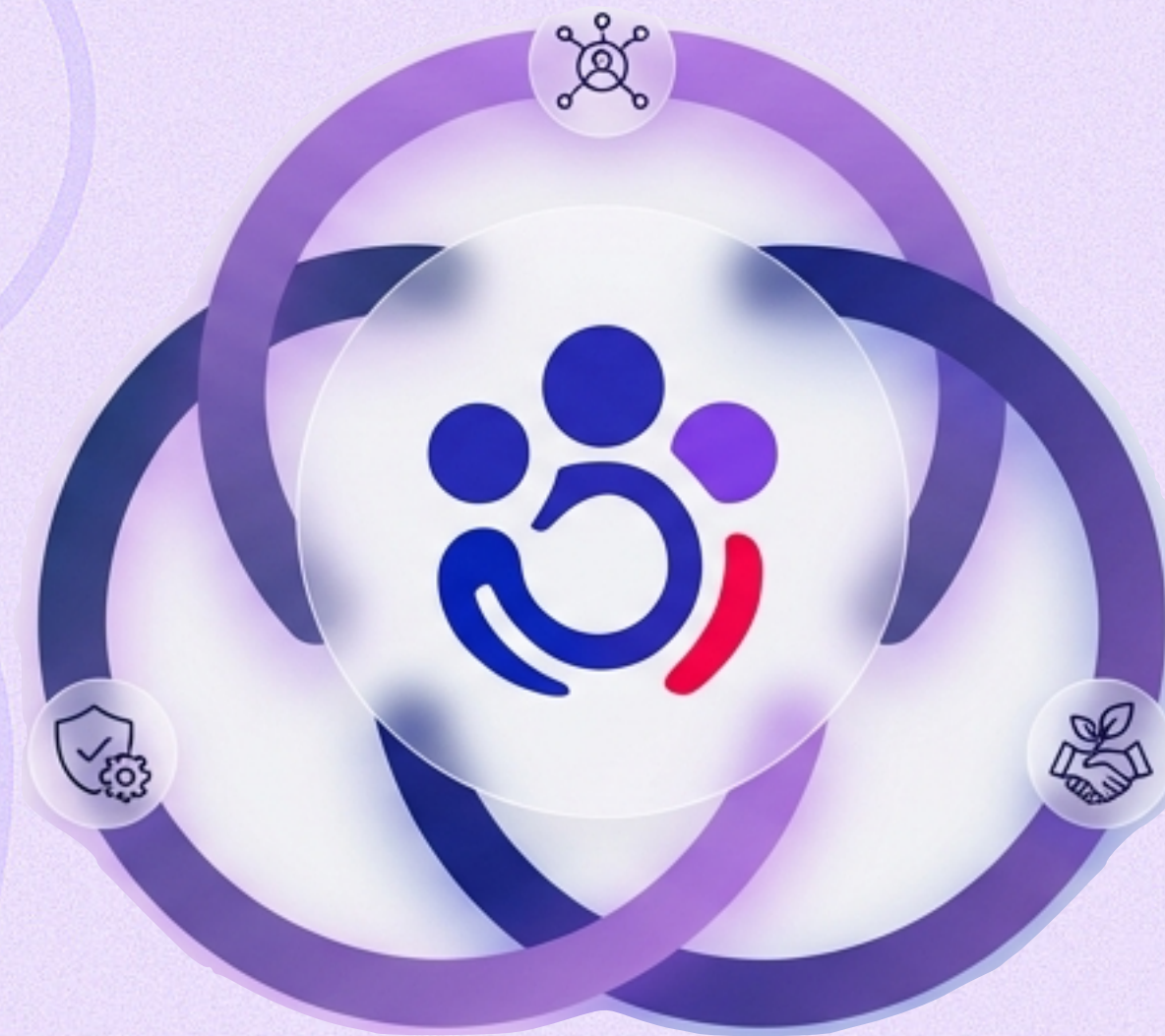
Moving past limited trials into larger scale use would allow us to prove our hypothesis that an integrated change platform can sustain change and deliver value to users



AyniHealth: Today for you, Tomorrow for me

**Growth
& Connection**

**Safety
& Control**



**Sustainability
& Value**

Align. Implement. Sustain.

